

GuardTrak[®] II

Electronic Proximity Checkpoint System for Security Personnel



Securing your world

Securing your world

GuardTrak[®] II

Electronic Proximity Checkpoint System for Security Personnel

The GuardTrak is a guard patrol tour data collecting terminal based on RFID technology. Its' function is to scan RFID chips, that has been pre-set in place around the route that requires patrolling. The system was developed to aid the management, to efficiently program and supervise their guard activities. By using the GuardTrak system, it will considerable reduce the probability of theft, fire and industrial accidents.

FEATURES:

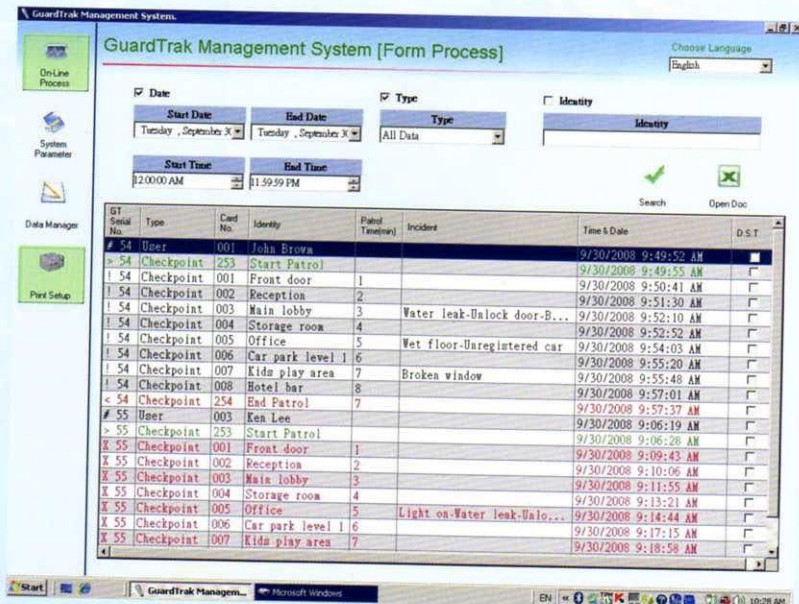
- Data analyzer & battery charger in one
- Data transfer to your PC
- 3200 booking memory capacity
- RFID checkpoint chips
- Impact-resistant to protect stored data
- Water proof

APPLICATIONS:

- Commercial building patrolling
- Community & School patrolling
- Factories & Warehouse patrolling
- Airport & Car Park patrolling
- Sports Ground & Parks patrolling
- Hotel & Hospital patrolling

GuardTrak Management System software

included with the purchase of the GuardTrak II system



SPECIFICATIONS:

Data collecting hand-held device

- Weight: approx. 240 gram
- Size (HWD): 210×73×40 mm
- Power supply: Rechargeable lithium batteries (3.7V)
- Operating temperatures: -10 to 55 Deg. C

Station box

- Weight: approx. 265 gram
- Size (HWD): 97×110×110 mm
- Power supply: Adaptor INPUT AC100-240V
OUTPUT 6V...3A
- Operating temperature: Room temperature

OPTION:

Personnel ID tags



Start & End cards



Incident cards

